

Haven Seaway



Type of vessel:	Mono-hull Jack Up Barge
Length o.a.:	18 m
Breadth o.a.:	15 m
Depth o.a. Hull:	3 m
Deck Area	150 m ²
Max Leg Length:	34 m
Leg Diameter:	1.2 m
Single Jack Capacity	140 Tonnes
Jacking Stroke	1.5 m
Average Jacking Speed	15 m/hour
Gross Tonnage:	129.6 GT
Lightship Weight:	405 Tonnes
Allowable Deck Load:	120 Tonnes
Allowable Deck Point Load:	6 Tonnes/m ²
Certification:	Certificate of British Registry MCA Workboat Certificate Life Raft Certificate of Inspection Certificate of survey Ofcom Ship Radio Licence Fire Fighting Certificate of Inspection
Standard Equipment:	Mess Room, Workshop, Twin 150 kva & 35 kva Harbour Set Generators, Fuel Bunker, Navigation Shapes and Lights, Bollards, Handrails, Moon Pool, 5 Tonne Hydraulic Winches.
Optional Equipment:	Access Walkways, Cantilever Platforms, Knuckle Boom Cranes.

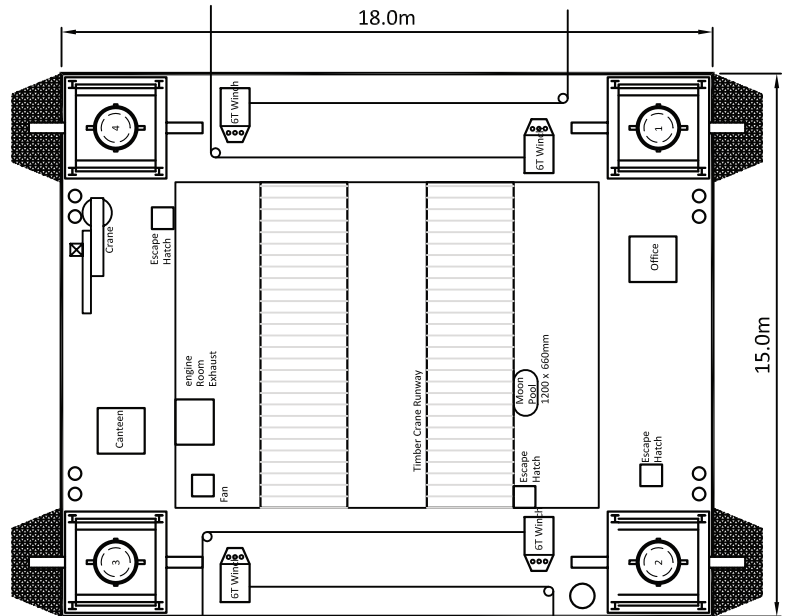


RED7MARINE
MARINE CONSTRUCTION
DIVING AND SUBSEA

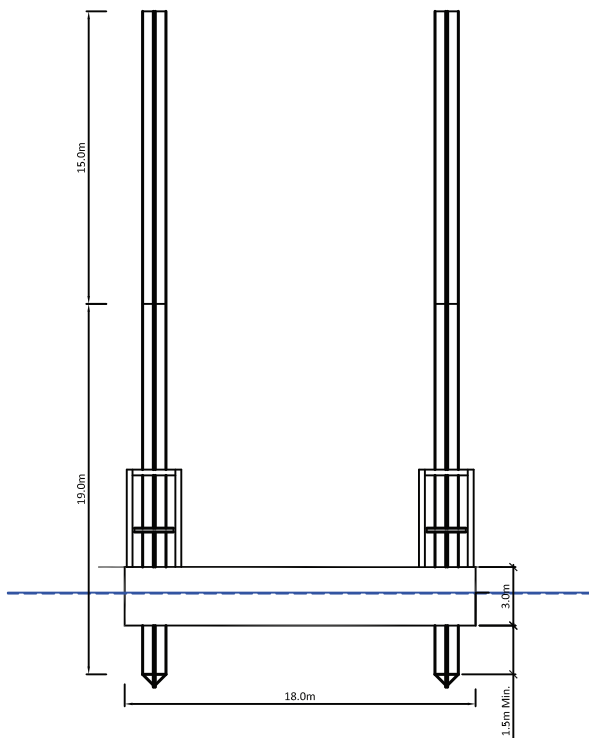
RED7MARINE LTD
SHORE FARM
WRABNESS
MANNINGTREE
CO11 2TG

Tel: +44 (0)1255 886710
Fax: +44 (0)1255 886658
Email: enquiries@r7m.co.uk
Web: www.red7marine.co.uk

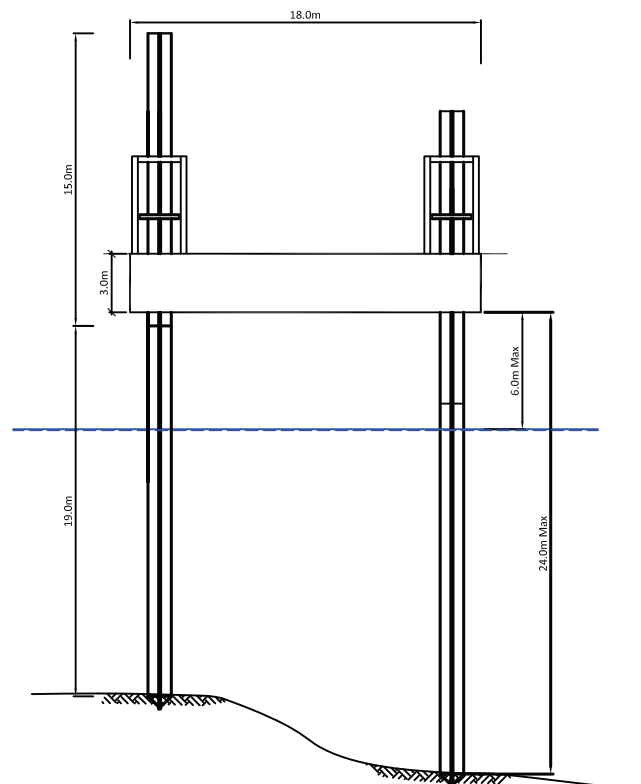
Haven Seaway



Plan View



Elevation of Floating Platform



Elevation of Jacked-up Platform



RED7MARINE
MARINE CONSTRUCTION
DIVING AND SUBSEA

RED7MARINE LTD
SHORE FARM
WRABNESS
MANNINGTREE
CO11 2TG

Tel: +44 (0)1255 886710
Fax: +44 (0)1255 886658
Email: enquiries@r7m.co.uk
Web: www.red7marine.co.uk