

Haven Seaforth



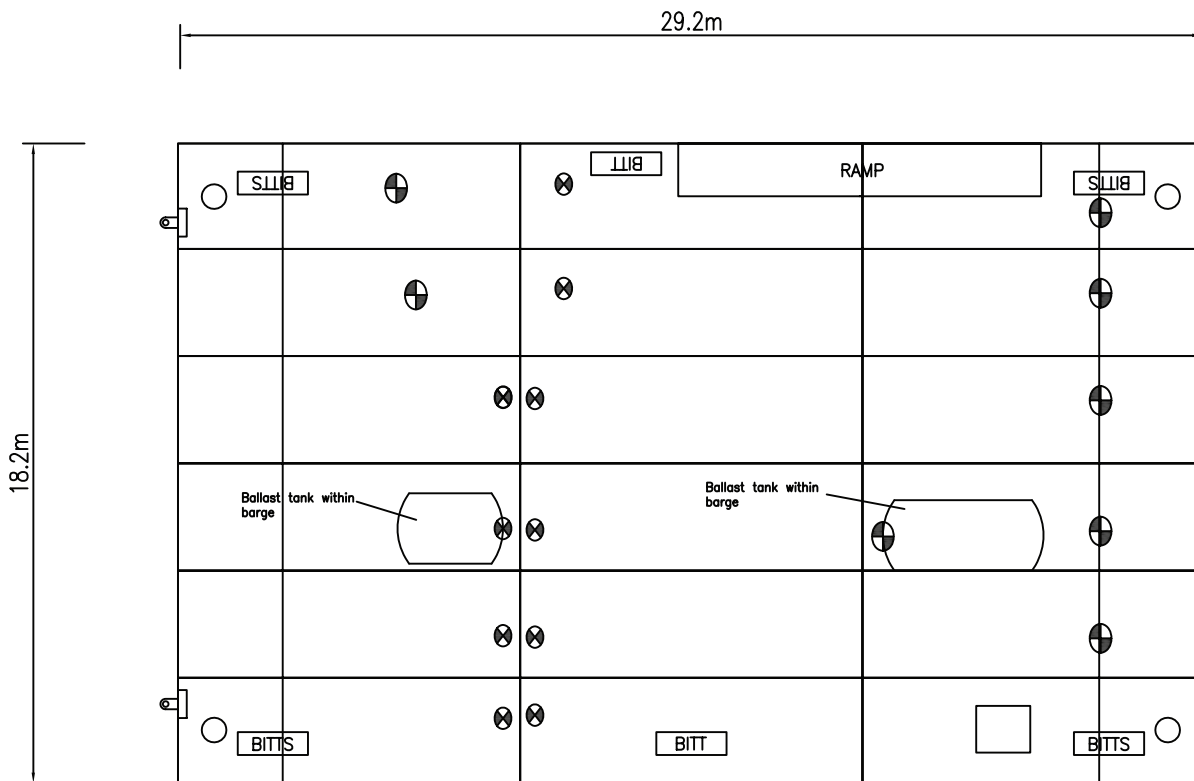
Type of vessel:	Flat Top Spud Leg Barge
Length o.a.:	29.57 m
Breadth o.a.:	18.2 m
Depth o.a. Hull:	3.3 m
Deck Area	538.17 m ²
Max Spud Leg Length:	25 m
Spud Leg Diameter:	0.61 m
Gross Tonnage:	445.34 GT
Lightship Weight:	297 Tonnes
Allowable Deck Load:	At Sea: 558 Tonnes, Sheltered Water: 691 Tonnes
Allowable Deck Point Load:	5.00 Tonnes/m ²
Draft at Zero Load:	0.71 m
Draft at Maximum Load:	2.3 m
Certification:	MCA UK Loadline Exemption
Optional Equipment:	Winches, Anchors, Fenders, Crane Mats, Hand Railing, Spud Legs



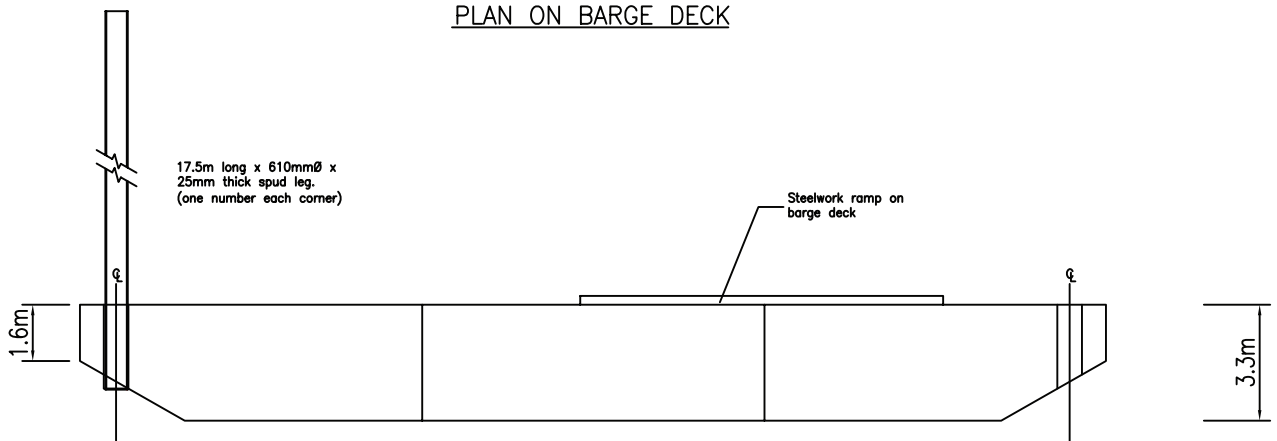
RED7MARINE
MARINE CONSTRUCTION
DIVING AND SUBSEA

RED7MARINE LTD
SHORE FARM
WRABNESS
MANNINGTREE
CO11 2TG

Tel: +44 (0)1255 886710
Fax: +44 (0)1255 886658
Email: enquiries@r7m.co.uk
Web: www.red7marine.co.uk



PLAN ON BARGE DECK



SECTION A-A
LONG SECTION THROUGH BARGE