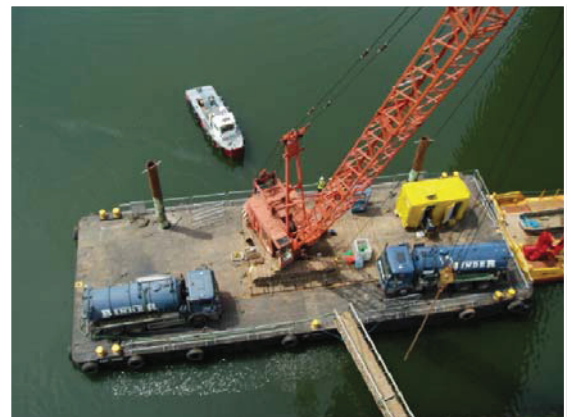


Haven Seafield



Type of vessel:	Flat Top Spud Leg Barge
Length o.a.:	30.0 m
Breadth o.a.:	11.2 m
Depth o.a. Hull:	2.5 m
Deck Area	336 m ²
Max Spud Leg Length:	25 m
Spud Leg Diameter:	0.61 m
Gross Tonnage:	209 GT
Lightship Weight:	149 Tonnes
Allowable Deck Load:	At Sea: 491 Tonnes, Sheltered Water: 608 Tonnes
Allowable Deck Point Load:	6.00 Tonnes/m ²
Draft at Zero Load:	0.54 m
Draft at Maximum Load:	1.96 m
Certification:	Bureau Veritas I Pontoon Unrestricted Navigation International Loadline
Optional Equipment:	Winches, Anchors, Fenders, Crane Mats, Hand Railing, Spud Legs

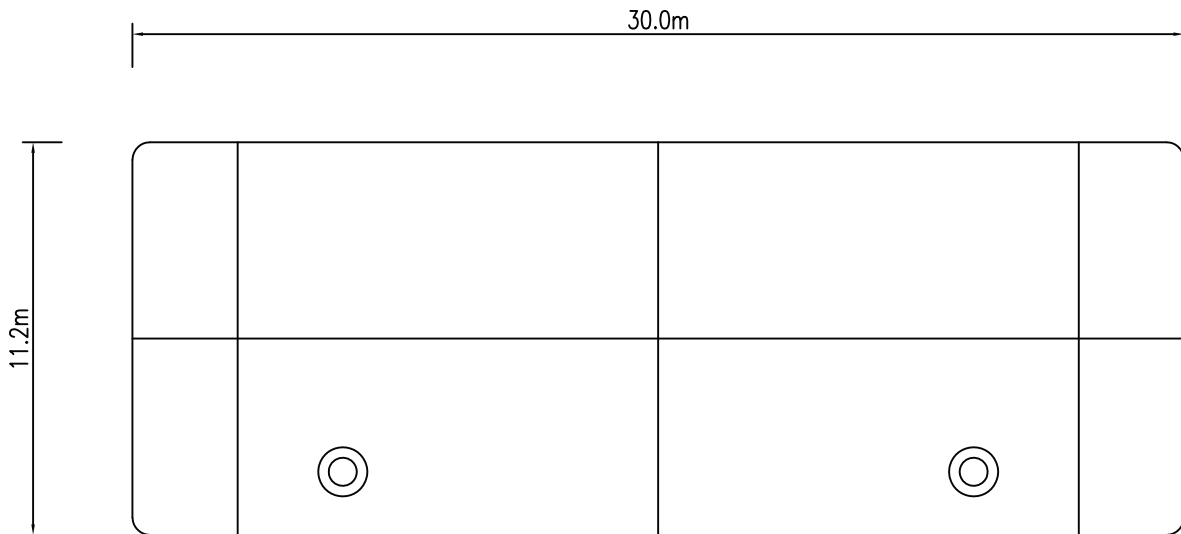


RED7MARINE
MARINE CONSTRUCTION
DIVING AND SUBSEA

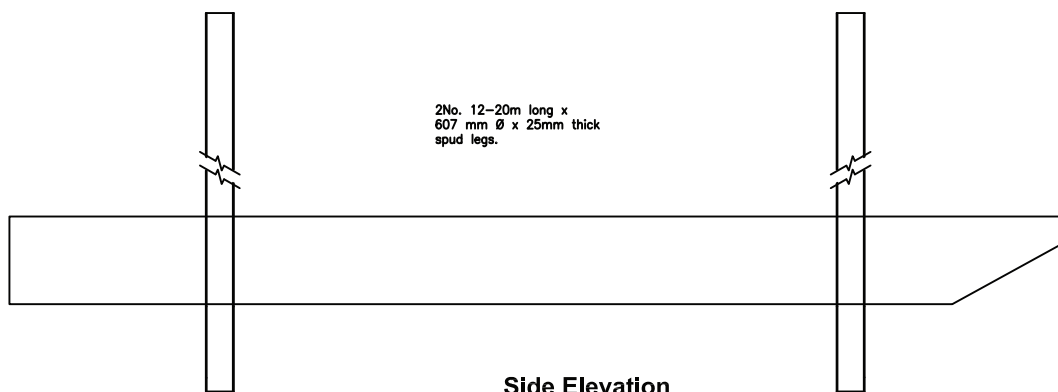
RED7MARINE LTD
SHORE FARM
WRABNESS
MANNINGTREE
CO11 2TG

Tel: +44 (0)1255 886710
Fax: +44 (0)1255 886658
Email: enquiries@r7m.co.uk
Web: www.red7marine.co.uk

Haven Seafield



Plan View



Side Elevation



RED7MARINE
MARINE CONSTRUCTION
DIVING AND SUBSEA

RED7MARINE LTD
SHORE FARM
WRABNESS
MANNINGTREE
CO11 2TG

Tel: +44 (0)1255 886710
Fax: +44 (0)1255 886658
Email: enquiries@r7m.co.uk
Web: www.red7marine.co.uk